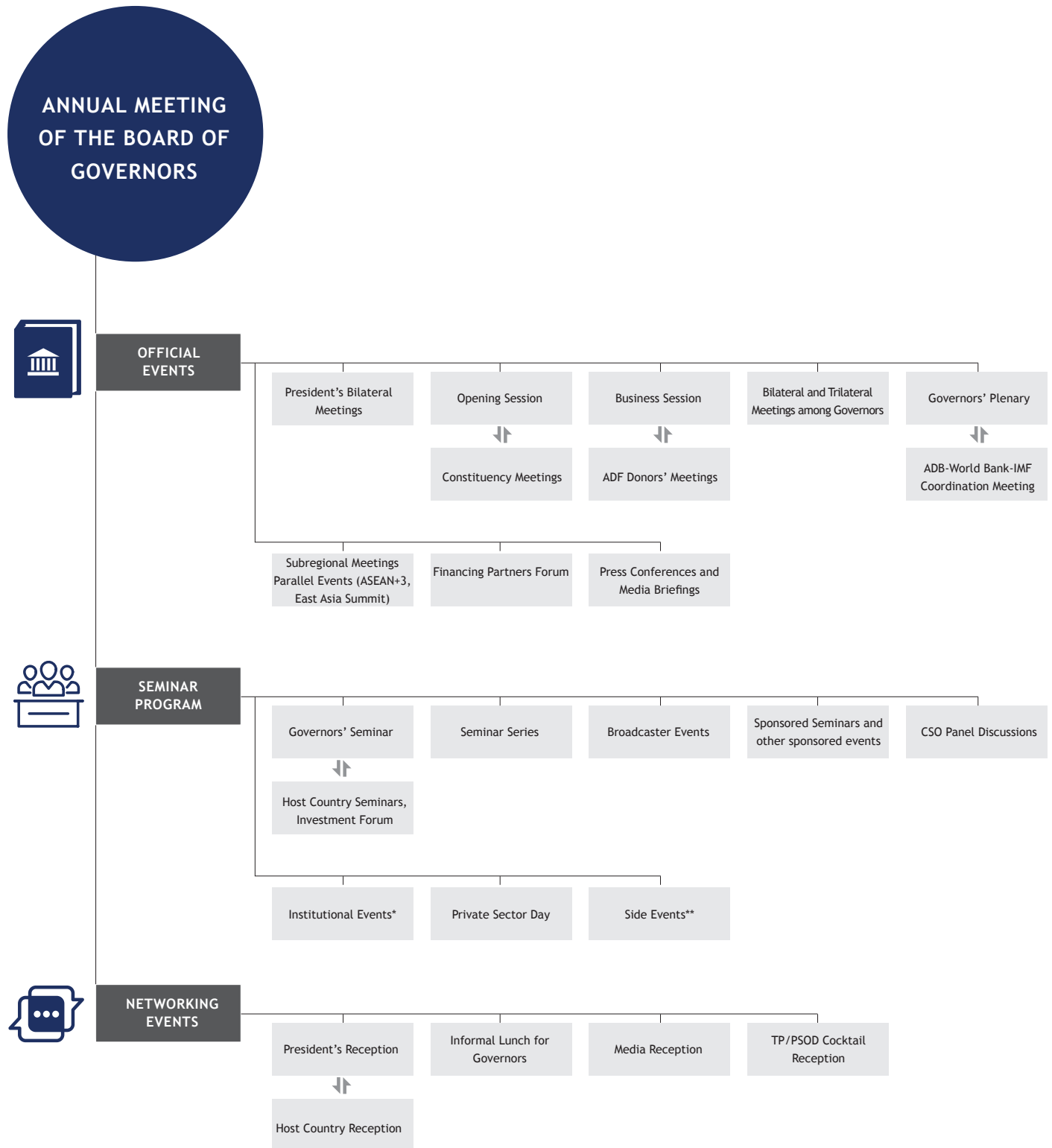


AM Types of Events

Appendix 16



*Institutional events relate to the work of specific ADB department or office. They may be used to present findings from a study or assessment, to brief participants on a new initiative, to consult participants on an ongoing issue, or to present updates on a specific matter.

**Side events are events requested by partner organizations on the side lines of the Annual Meeting, not led by ADB and not included in ADB's planning of events.